

FIRST FLOOR AREA (OUTSIDE OF FRAME)
2,835 SQFT
GARAGE AREA (OUTSIDE OF FRAME)
864 SQFT

1 FIRST FLOOR PLAN

© 2023 HALPER ARCHITECTS LLC
DRAWINGS AND SPECIFICATIONS INCLUDING ELECTRONIC MEDIA FILES, AS INSTRUMENTS OF PROFESSIONAL SERVICE, ARE AND SHALL REMAIN THE PROPERTY OF THE ARCHITECT. THESE DOCUMENTS ARE NOT TO BE USED, IN WHOLE OR IN PART FOR ANY OTHER PROJECTS OR PURPOSES, OR BY ANY OTHER PARTIES THAN THOSE PROPERLY AUTHORIZED BY CONTRACT, WITHOUT THE SPECIFIC WRITTEN AUTHORIZATION OF HALPER ARCHITECTS, LLC.

HALPER ARCHITECTS LLC
225 Mill Street, Greenlitch, Connecticut 06830
Telephone: 203.531.5241
Facsimile: 203.531.5481
www.halper.com

HINTERLANDS
RHINEBECK, NEW YORK

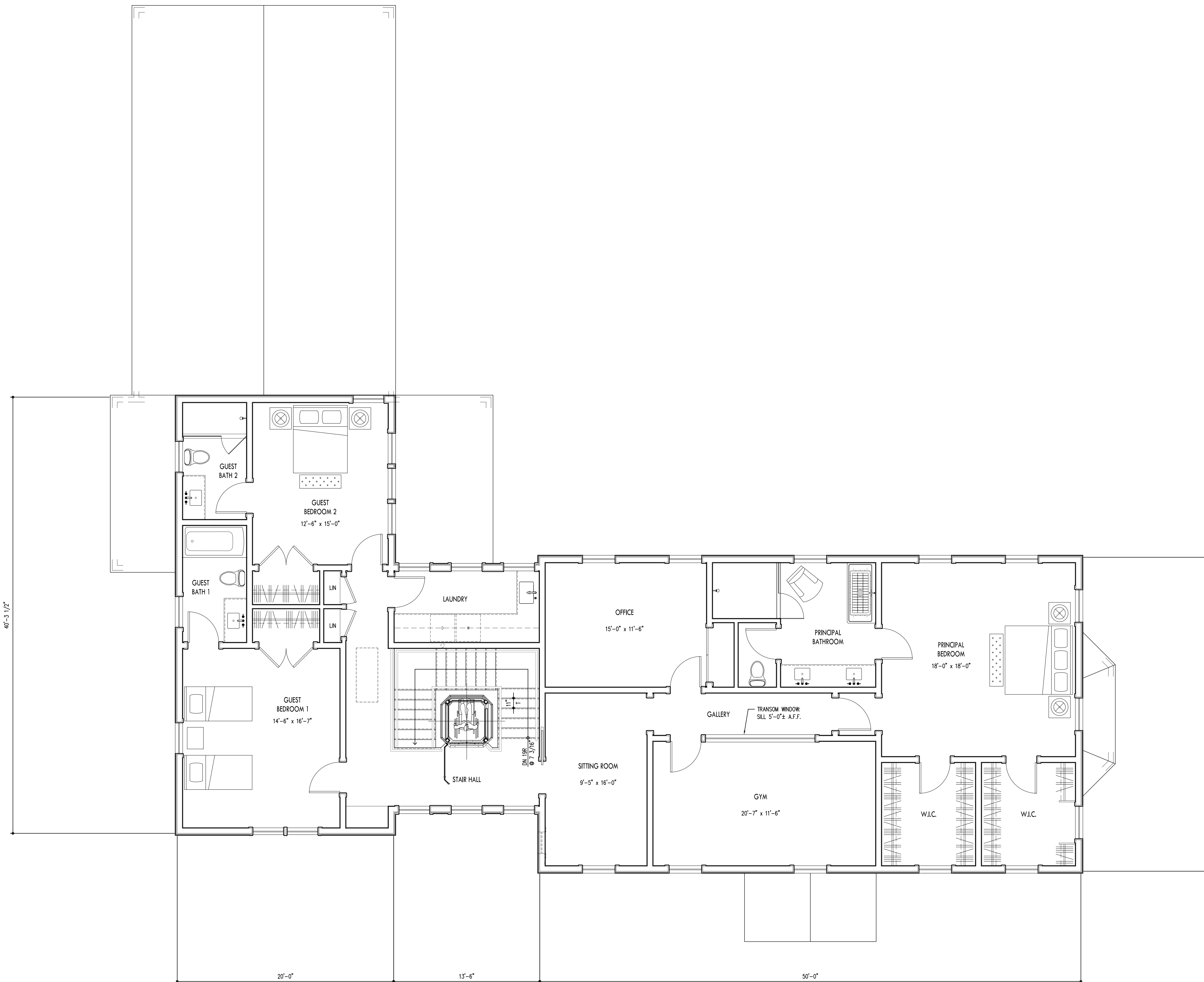
Revision	No.	Date	Description
	02.10.23	PROGRESS	

Title
FIRST FLOOR PLAN

Job No. **543**
Scale: **1/4" = 1'-0"**
Date
A111

PROGRESS

M:\SHARES\PROJECTS\HALPER CLIENTS\22543 HINTERLANDS\43 DRAWINGS\43 A111.DWG 2/10/23 12:01 PM A111 SD



SECOND FLOOR AREA (OUTSIDE OF FRAME)
2,563 SQFT

1 SECOND FLOOR PLAN

© 2023 HALPER ARCHITECTS LLC

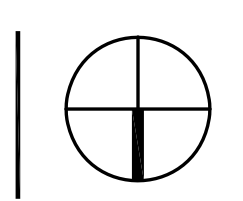
DRAWINGS AND SPECIFICATIONS INCLUDING ELECTRONIC MEDIA FILES, AS INSTRUMENTS OF PROFESSIONAL SERVICE, ARE AND SHALL REMAIN THE PROPERTY OF THE ARCHITECT. THESE DOCUMENTS ARE NOT TO BE USED, IN WHOLE OR IN PART FOR ANY OTHER PROJECTS OR PURPOSES, OR BY ANY OTHER PARTIES THAN THOSE PROPERLY AUTHORIZED BY CONTRACT, WITHOUT THE SPECIFIC WRITTEN AUTHORIZATION OF HALPER ARCHITECTS, LLC.

HALPER ARCHITECTS LLC
225 Mill Street, Greenwich, Connecticut 06830
Telephone: 203.531.5241
Facsimile: 203.531.5481
www.halper.com

HINTERLANDS
RHINEBECK, NEW YORK

Revision	No.	Date	Description
	02.10.23	PROGRESS	

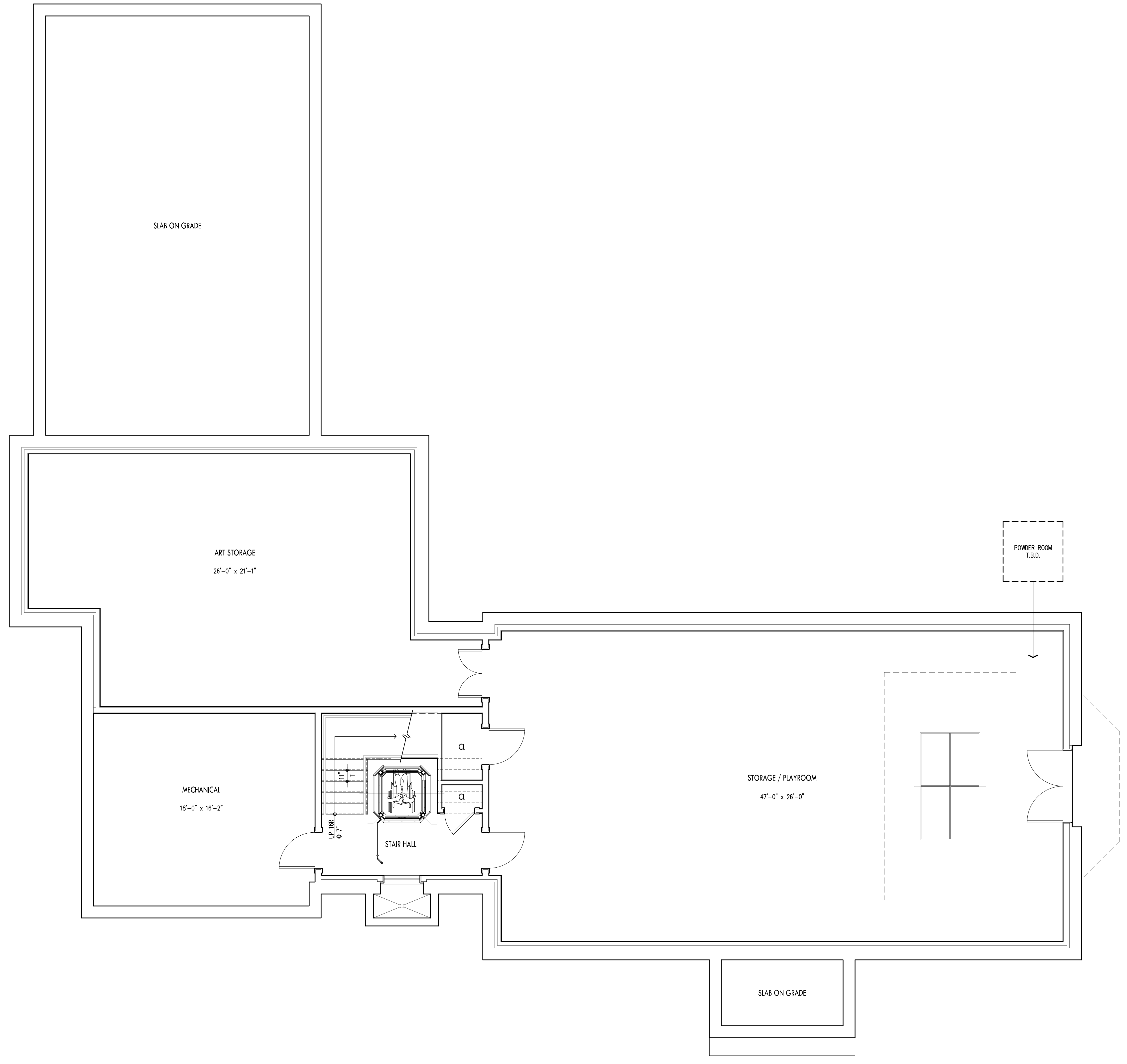
Title: SECOND FLOOR PLAN



Job: 543
Scale: 1/4" = 1'-0"
Date: _____
Drawn/Checked: **A112**

PROGRESS

M:\SHARES\PROJECTS\HALPER CLIENTS\22543 HINTERLANDS\43 DRAWINGS\43 AT12.DWG 2/10/23 12:03 PM AT12.SD



BASEMENT FINISHED AREA
 (OUTSIDE OF FRAME,
 INSIDE FOUNDATION WALLS)
 2,186 SQFT

1 BASEMENT PLAN

© 2023 HALPER ARCHITECTS LLC
 DRAWINGS AND SPECIFICATIONS INCLUDING ELECTRONIC MEDIA FILES, AS INSTRUMENTS OF PROFESSIONAL SERVICE, ARE AND SHALL REMAIN THE PROPERTY OF THE ARCHITECT. THESE DOCUMENTS ARE NOT TO BE USED, IN WHOLE OR IN PART FOR ANY OTHER PROJECTS OR PURPOSES, OR BY ANY OTHER PARTIES THAN THOSE PROPERLY AUTHORIZED BY CONTRACT, WITHOUT THE SPECIFIC WRITTEN AUTHORIZATION OF HALPER ARCHITECTS, LLC.

HALPER ARCHITECTS LLC
 225 Mill Street, Greenwich, Connecticut 06830
 Telephone: 203.531.5241
 Facsimile: 203.531.5481
 www.halper.com

HINTERLANDS
 RHINEBECK, NEW YORK

Revision	No.	Date	Description
	02.10.23		PROGRESS

Title: **BASEMENT PLAN**

Job: **543**
 Scale: **1/4" = 1'-0"**
 Date: _____
 Drawn/Checked: **A110**

PROGRESS

M:\SHARES\PROJECTS\HALPER CLIENTS\22543 HINTERLANDS\43 DRAWINGS\43 AT10.DWG 2/10/23 12:02 PM AT10 50